

Note that changes in the tables are calculated from more detailed data and may not match changes calculated manually from the figures presented in the text. All data are in seasonally adjusted terms.

## OVERVIEW

Seasonally adjusted **employment** increased by 88,700 over the month (exceeding all market expectations), to stand at 13,006,900 in February 2021, and is now 3,600 *above* the level recorded in March 2020 (the month that Australia recorded its 100<sup>th</sup> COVID-19 case). The rise in employment over the month was driven, entirely, by an increase in **full-time employment**, which rose by 89,100, to stand at a record high of 8,895,000. Full-time employment is now 18,300 (or 0.2 per cent) higher than in March. **Part-time** employment decreased by 500 in February, to stand at 4,111,900, and is 14,700 (or 0.4 per cent) below the level recorded in March. The **unemployment rate** decreased by 0.5 percentage points over the month, to 5.8 per cent in February, but is above the 5.2 per cent recorded in March. The **participation rate** increased by 0.1 percentage points over the month, to stand at an equal record high of 66.1 per cent in February, and is *above* the rate recorded in March.

Table 1 – Key figures

	Feb-21	Jan-21 to Feb-21		Mar-20 to Feb-21	
		('000)	(%)	('000)	(%)
Employment ('000)	13,006.9	88.7	0.7	3.6	0.0
Full-time ('000)	8,895.0	89.1	1.0	18.3	0.2
Part-time ('000)	4,111.9	-0.5	0.0	-14.7	-0.4
Unemployment ('000)	805.2	-69.9	-8.0	89.2	12.5
Unemployment rate (%)	5.8	-	-0.5 pts	-	0.6 pts
Participation rate (%)	66.1	-	0.1 pts	-	0.2 pts

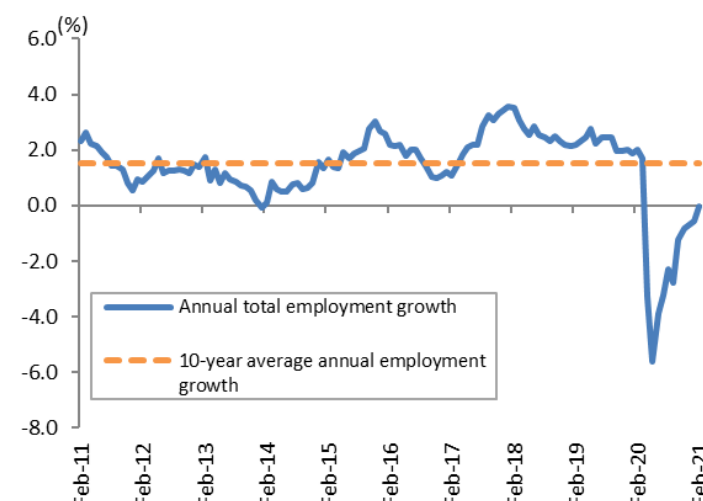
## EMPLOYMENT

Table 2 – Employment ('000)

	Feb-21	Change over the month	Change since March 2020
Persons	13,006.9	0.7%	0.0%
Male	6,832.6	0.2%	-0.2%
Female	6,174.2	1.2%	0.3%

- **Employment** rose by 88,700 in February 2021, to stand at 13,006,900, and is now 3,600 higher than in March 2020.
- **Full-time employment** increased by 89,100 in February 2021, to stand at a record high of 8,895,000, and is 18,300 (or 0.2 per cent) above the level recorded in March 2020.
- **Part-time employment** decreased by 500 in February 2021, to stand at 4,111,900, and is 14,700 (or 0.4 per cent) below the level recorded in March 2020.
- **Female employment** increased by 74,100 in February 2021, to stand at a record high of 6,174,200, and is 19,500 (or 0.3 per cent) above the level recorded in March 2020.
- **Male employment** increased by 14,600 over the month, to 6,832,600, but is 16,000 (or 0.2 per cent) below the level recorded in March.

Chart 1 – Annual employment growth (%)



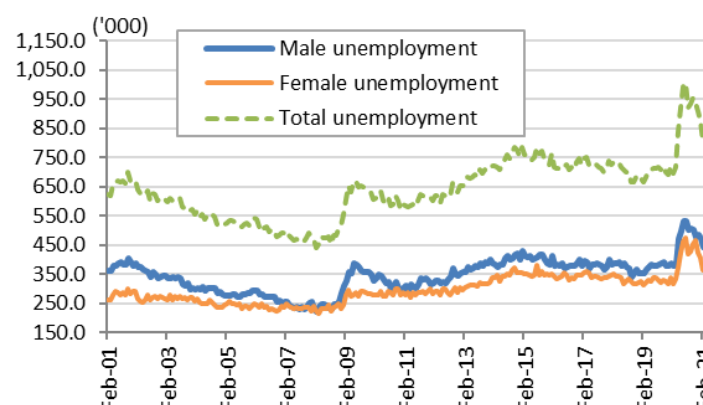
## UNEMPLOYMENT

Table 3 – Unemployment ('000)

	Feb-21	Change over the month	Change since March 2020
Persons	805.2	-8.0%	12.5%
Male	442.6	-6.0%	15.5%
Female	362.6	-10.3%	8.9%

- The level of **unemployment** fell by 69,900 in February 2021, to stand at 805,200, but is 89,200 (or 12.5 per cent) above the level recorded in March 2020.
- **Male unemployment** decreased by 28,200 over the month, to 442,600 in February 2021, but is 59,400 (or 15.5 per cent) above the level recorded in March 2020.
- **Female unemployment** decreased by 41,700 over the month, to 362,600 in February 2021, but is 29,800 (or 8.9 per cent) above the level recorded in March 2020.

Chart 2 – Unemployment by gender



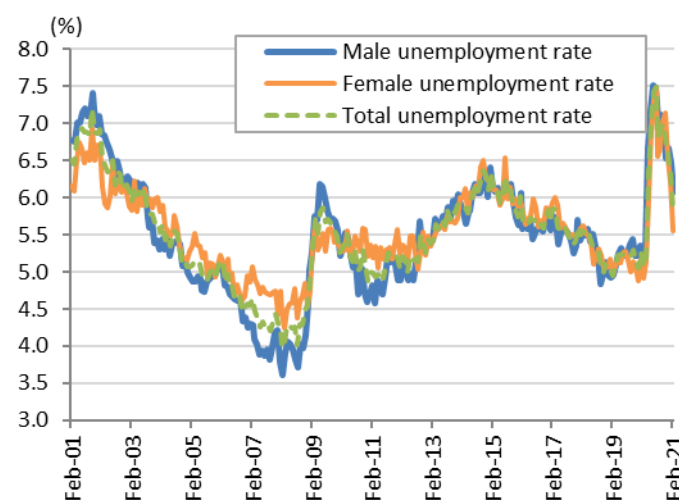
# UNEMPLOYMENT RATE

Table 4 – Unemployment rate (%)

	Feb-21	Change over the month	Change since March 2020
Persons	5.8	-0.5 pts	0.6 pts
Male	6.1	-0.4 pts	0.8 pts
Female	5.5	-0.7 pts	0.4 pts

- The **unemployment rate** decreased from 6.3 per cent in January 2021, to 5.8 per cent in February 2021. Since March 2020, however, the unemployment rate has risen by 0.6 percentage points.
- The **male unemployment rate** declined by 0.4 percentage points over the month, to 6.1 per cent in February 2021, but is 0.8 percentage points above the rate recorded in March 2020.
- The **female unemployment rate** fell by 0.7 percentage points over the month, to 5.5 per cent in February 2021, but is 0.4 percentage points above the rate recorded in March 2020.

Chart 3 – Unemployment rate by gender



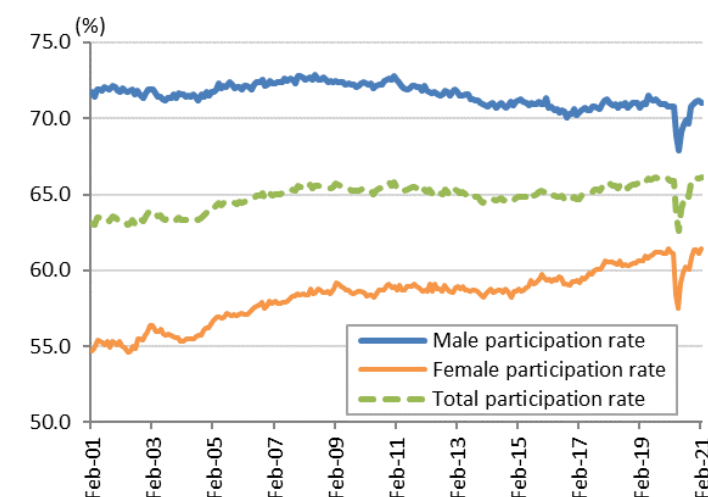
# PARTICIPATION RATE

Table 5 – Participation rate (%)

	Feb-21	Change over the month	Change since March 2020
Persons	66.1	0.1 pts	0.2 pts
Male	71.0	-0.2 pts	0.2 pts
Female	61.4	0.3 pts	0.3 pts

- The **participation rate** increased by 0.1 percentage points in February 2021, to stand at 66.1 per cent, and is above the 65.9 per cent recorded in March 2020.
- The **male participation rate** decreased by 0.2 percentage points over the month, to 71.0 per cent in February 2021, but is 0.2 percentage points above the rate recorded in March 2020.
- The **female participation rate** increased by 0.3 percentage points over the month, to 61.4 per cent in February 2021, and is 0.3 percentage points above the rate recorded in March 2020.

Chart 4 – Participation rate by gender



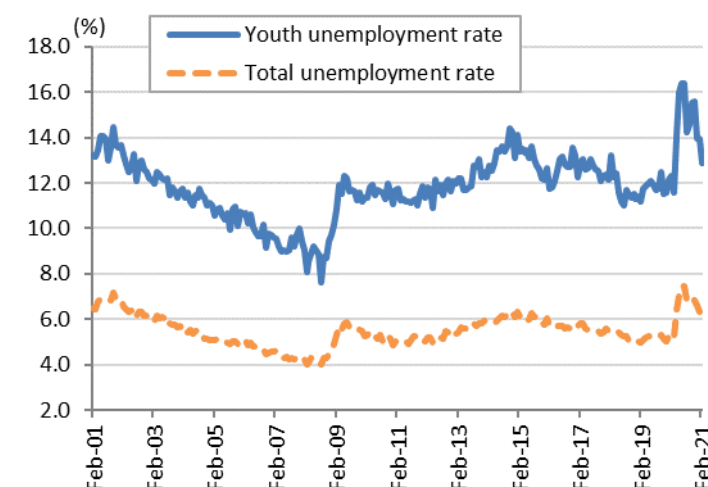
# YOUTH (15-24 YEARS)

Table 6 – Key youth labour market indicators

	Feb-21	Change over the month	Change since March 2020
Youth employment ('000)	1,865.1	2.0%	-3.8%
Youth unemployment ('000)	275.7	-7.6%	8.2%
Youth unemployment rate	12.9	-1.1 pts	1.3 pts

- Youth employment** increased by 36,800 over the month, to 1,865,100 in February 2021. Since March 2020, however, youth employment has fallen by 74,100 (or 3.8 per cent).
- The level of **youth unemployment** decreased by 22,800 in February 2021, to 275,700, but is 21,000 (or 8.2 per cent) above the level recorded in March 2020.
- The **youth unemployment rate** decreased from 14.0 per cent in January 2021, to 12.9 per cent in February 2021. Since March 2020, the youth unemployment rate has risen by 1.3 percentage points.
- The **youth participation rate** increased by 0.3 percentage points over the month, to 68.6 per cent in February 2021, and is 0.3 percentage points above the rate recorded in March 2020.

Chart 5 – Youth and total unemployment rate



# STATES AND TERRITORIES

**Table 7 – Selected state and territory indicators**

	Employment ('000)		Participation rate (%)	
	Feb-21	Monthly change	Feb-21	Monthly change
New South Wales	4,113.1	42.0	65.6	0.4 pts
Victoria	3,439.3	26.6	66.6	0.0 pts
Queensland	2,603.8	23.9	66.2	-0.1 pts
South Australia	847.4	6.6	62.4	0.3 pts
Western Australia	1,369.4	1.8	67.7	-0.1 pts
Tasmania	261.2	3.8	61.7	0.7 pts
Northern Territory	131.1	0.4	73.1	-0.3 pts
ACT	236.1	2.7	71.7	0.6 pts

- All states and territories recorded an increase in **employment** in February 2021, with the largest growth recorded in New South Wales (up 42,000), followed by Victoria (up by 26,600) and Queensland (up by 23,900). By contrast, the smallest increase was recorded in the Northern Territory (up by 400).
- South Australia recorded the highest **unemployment rate** of all states and territories, of 6.8 per cent in February 2021, while the ACT recorded the lowest unemployment rate, of 4.1 per cent.

**Chart 6 – State and Territory unemployment rates**

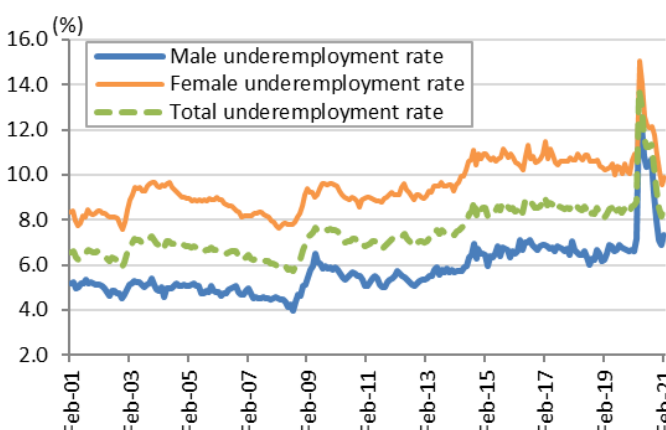

- The Northern Territory recorded the highest **participation rate**, of 73.1 per cent in February 2021, while Tasmania recorded the lowest participation rate, of 61.7 per cent.

# UNDEREMPLOYMENT

**Table 8 – Underemployment ('000)**

	Feb-21	Change over the month	Change since March 2020
Persons	1,178.7	5.0%	-2.4%
Male	533.4	6.1%	2.8%
Female	645.3	4.1%	-6.3%

- The level of **underemployment** increased by 56,200 over the month, to 1,178,700 in February 2021, but is 28,600 (or 2.4 per cent) below the level recorded in March 2020.
- The **underemployment rate** increased by 0.4 percentage points over the month, to 8.5 per cent, but is below the 8.8 per cent recorded in March 2020.
- The **male underemployment rate** increased by 0.4 percentage points over the month, to 7.3 per cent in February 2021, and is above the 7.2 per cent recorded in March 2020.
- The **female underemployment rate** increased by 0.3 percentage points over the month, to 9.9 per cent in February 2021, but is below the 10.6 per cent recorded in March 2020.

**Chart 7 – Underemployment rate by gender (%)**


# HOURS WORKED

**Table 9 – Hours worked ('000,000)**

	Feb-21	Change over the month	Change since March 2020
Persons	1,766.8	6.1%	-0.7%
Male	1,025.5	5.3%	-1.6%
Female	741.3	7.2%	0.6%

- The number of **monthly hours worked** in all jobs increased by 101.9 million hours over the month, to 1,766.8 million hours in February 2021, but is 11.8 million hours (or 0.7 per cent) below the level recorded in March 2020.
- Male hours worked** rose by 52.0 million hours in February 2021, but has decreased by 16.2 million hours (or 1.6 per cent) since March 2020.
- Female hours worked** rose by 50.0 million hours over the month, to stand at a record high of 741.3 million hours in February 2021.

**Chart 8 – Annual change in hours worked by gender (%)**
